

The Northlake Nature Center is located off of Highway 190 east of Mandeville on Bayou Castine. The Nature Center is open 365 days a year from Dawn to Dusk.

### Nature Trails

**By the Beaver Pond:** An open air pavillion overlooks the Beaver Pond when you first enter the NNC. There are several small trails that wind on the south side of the pond including the Old Clubhouse Loop which brings you around the historic clubhouse. This is a short and easy loop and is wonderful for viewing water birds, turtles, and other pond life.

**Eagle Trail:** A .75 mile loop winding through Longleaf Pine restoration areas.

**South Loop:** 1.2 miles long with scenic overlooks along the loop. The loop follows Bayou Castine and is an easy-moderate hike.

**North Loop:** This 1.75 loop is a beautiful trail that takes you through Longleaf Pine restoration areas, pine forest, and the scenic overlooks of Bayou Castine. The Savanna Lake Trail is accessible from North Loop and brings you to some of the most scenic areas at the NNC. This loop is a moderate hike due to the distance.

Northlake Nature Center  
P.O.Box 8511  
Mandeville, LA 70470



# Northlake Nature Center



## Children's Programs

## Site Information

The 400-acre NNC site has over 6 miles of nature trails and an education pavilion for programs. The site includes pine forest, swamps, ponds, and numerous plants and animals. Join us for one of our exciting and educational programs with a NNC trained naturalist.



### Program Fees

On-site Programs: \$2/person  
\$ 35 minimum

On-Site Unassisted: \$ 1/person  
\$ 25 minimum

Off-site Programs: \$ 3/child  
\$ 30 minimum

(Fees are subject to change)

## Children's Programs

**Longleaf Pine Habitat-** This program explores trees in the area and how to identify them.

**Conservation-** Learn about conservation and participate in one of the NNC projects.

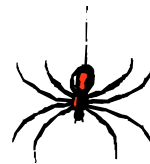
**Pond Life-** Choice of reptile and amphibian program or a water quality program. Live specimens may be brought to show the class an example of these animals. Dip nets and testing kits will be used to teach water quality.

**Native Wildlife-** This program will teach the students about our local wildlife and endangered species. Live specimens may be brought in (seasonally).

**Animal Tracks-** The program consists of an explanation of what mammals are, the best times to find them, habitats, and may include an art project.

**Identifying Tree Ages-** Teaches students how to count tree rings, find how a tree their age would look, and discover the important information trees can teach us about our environmental quality.

**Birds/Biodiversity-** Learn about birds and how bird beaks vary in shape depending on the birds diet.



**Bugs-** Program discussing bugs and their role in the ecosystem.

**Food Chain-** This program will discuss the importance of the food chain. A game will demonstrate the importance of predator/prey relationships in the ecosystem.

**Flowers-** Learn about flowers and plant seeds in cups to take home or leave at the NNC.

**Soil-** This program shows the layers of soil and discusses the importance of worms, mold, mushrooms, and other biodegraders in the environment.



The NNC offers a variety of programs and may not be listed above. All programs can include an art program and nature hike. Programs are developed for each specific group and are available for children between the ages of 6-18. For more information or to register for a program, please contact the Northlake Nature Center at (985) 626-1238 or visit our website at [www.northlakenature.org](http://www.northlakenature.org).